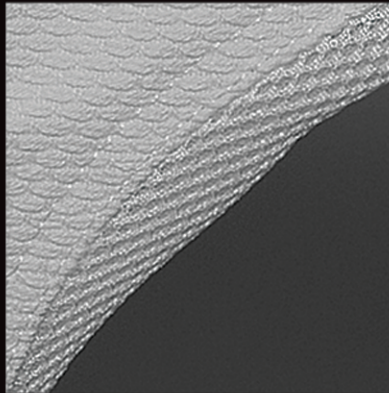


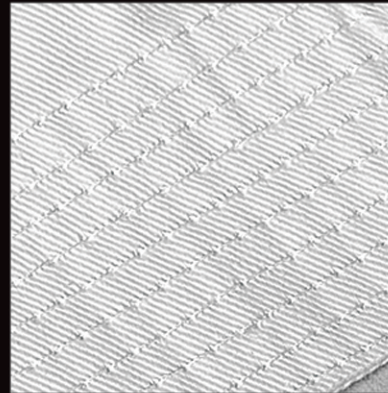


**Martial Arts Uniforms
& Boxing Equipment**

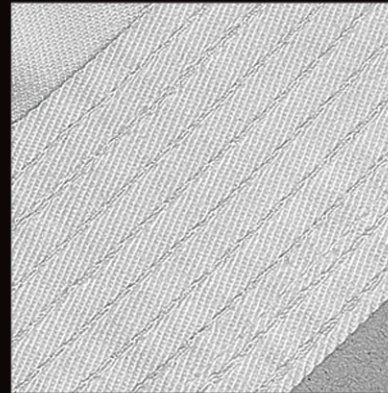
Innovation and new development



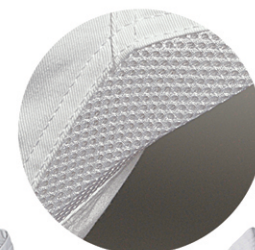
NEW INNOVATION IN JUDO



NEW INNOVATION IN STITCHING WITH SPECIAL MACHINE FOR 6 TO 10 ROWS



THAPUR PAKISTAN
www.thapurgroup.com



TPL-1205
Ju Jitsu Uniform 550 g/m2 pearl weave with contrast stitching
 Specially designed rice grain fabric for bijj uniforms pant with special draw cord, with full knee protection
 Size available, K1, K2, K3, K4, A1, A2, A3, A4
 Also available in 450 g/m2

TPL-1206
Ju Jitsu Uniform 550 g/m2 pearl weave with contrast stitching
 Specially designed rice grain fabric for bijj uniforms pant with special draw cord, with full knee protection
 Size available, K1, K2, K3, K4, A1, A2, A3, A4
 Also available in 450 g/m2

TPL-1207
Ju Jitsu Uniform 550 g/m2 pearl weave with contrast stitching
 Specially designed rice grain fabric for bijj uniforms pant with special draw cord, with full knee protection
 Size available, K1, K2, K3, K4, A1, A2, A3, A4
 Also available in 450 g/m2

TPL-1064
Karate Silver Label 7.5 oz cvc 55%c 45%p
 Light weight karate uniform in cvc fabric with clima cool in arm pit and on front jacket panels
 pants available in traditional draw string and elastic also available in pre shrunk and 3 to 10 rows stitches
 All colors available
 Size available, 0000/100, 000/110, 00/120, 0/130
 1/140, 2/150, 3/160, 4/170, 5/180, 6/190, 7/200,
 8/210, 9/220, 10/230.

TPL-1065
Karate Red Label 8.5 oz cvc 55%c 45%p
 Middle weight karate uniform in cvc fabric with unique innovation with clima cool on shoulder panels and on the pant side for comfort pants available in traditional draw string and elastic also available in pre shrunk and 3 to 10 rows stitches
 All colors available
 Size available, 0000/100, 000/110, 00/120, 0/130
 1/140, 2/150, 3/160, 4/170, 5/180, 6/190, 7/200,
 8/210, 9/220, 10/230.



TPL-2032

Made of cowhide special designed leather 3 inch cuff with velcro closing, filled with hand mould made of high density latex and foam palm with clima cool.
Size: 8oz, 10oz, 12oz, 14oz, 16oz.



TPL-2033

Made of cowhide leather with 2 colors stitched crossed cuff with velcro closing for better fit, filled with hand mould made of high density latex and foam.
Size: 8oz, 10oz, 12oz, 14oz, 16oz.



TPL-2034

Made of cowhide leather with neoprene punch crossed cuff with velcro closing, filled with hand mould made of high density latex and foam palm with clima cool.
Size: 8oz, 10oz, 12oz, 14oz, 16oz.



TPL-2035

Made of cowhide leather specially designed, neoprene with high density eva crossed cuff with special support to wrist, velcro closing, filled with hand mould made of high density latex and foam palm with clima cool.
Size: 8oz, 10oz, 12oz, 14oz, 16oz.



TPL-2036

Made of cowhide leather crossed cuff with extra support to wrist velcro closing, special designed machine mould
Size: 8oz, 10oz, 12oz, 14oz, 16oz.



TPL-2037

Made of buffalo leather special designed 3 inch cuff with buckle and velcro closing, special designed machine mould
Size: 8oz, 10oz, 12oz, 14oz, 16oz.



TPL-2038

Made of cowhide and buffalo leather with specially designed laces and elastic closure special designed machine mould
Size: 8oz, 10oz, 12oz, 14oz, 16oz.



TPL-2039

Made of cowhide leather with special printed top 3 inch cuff with velcro closing, machine mould different colors printing available
Size: 8oz, 10oz, 12oz, 14oz, 16oz.



TPL-2040

Made of combination of cowhide leather and imported vinyl palm with aero punch technology filled with special machine mould
Size: 8oz, 10oz, 12oz, 14oz, 16oz.



TPL-2041

Made of imported vinyl palm with aero punch technology filled with special machine mould
Size: 8oz, 10oz, 12oz, 14oz, 16oz.



TPL-2042

Made of vinyl palm with aero punch technology filled with special machine mould
Size: 8oz, 10oz, 12oz, 14oz, 16oz.



TPL-2043

Made of self designed PU/vinyl 3 inch elastic cuff with velcro closing filled with special machine mould
Size: 8oz, 10oz, 12oz, 14oz, 16oz.



TPL-2044

Made of imported artificial leather/vinyl 3 inch elastic cuff with velcro closing palm filled with high density foam and with special machine mould
Size: 8oz, 10oz, 12oz, 14oz, 16oz.



TPL-2045

Made of imported vinyl with printing filled with special machine mould
Size: 8oz, 10oz, 12oz, 14oz, 16oz.



TPL-2046

Made of vinyl and neoprene specially designed glove for better fit filled with special machine mould
Size: 8oz, 10oz, 12oz, 14oz, 16oz.



TPL-2047

Made of buffalo leather with 2 colors stitched crossed cuff with velcro closing for better fit, filled with hand mould made of high density latex and foam.
Size: 8oz, 10oz, 12oz, 14oz, 16oz.



TPL-2717
MMA Gloves curved
Made of cowhide special designed leather
open palm with reinforced thumb padded with
eva latex mould
Size: S, M, L, XL



TPL-2718
MMA Gloves curved
Made of special designed cowhide and goat leather
double strap for extra grip padded with high density
eva and foam
Size: S, M, L, XL



TPL-2719
MMA Gloves curved
Made of special designed cowhide leather
open palm without thumb hole made of high
density eva and foam with thicker punch
Size: S, M, L, XL



TPL-2720
MMA Gloves curved
Made of cowhide leather filled with high density
eva and foam double strap with velcro closing
Size: S, M, L, XL



TPL-2721
MMA Gloves curved
Made of cowhide leather filled with high density
eva and foam with comfort fit
Size: S, M, L, XL



TPL-2722
MMA Gloves curved
Made of cowhide leather with printing
padded with high density eva and foam
Size: S, M, L, XL



TPL-2723
MMA Gloves curved
Made of buffalo leather filled with high density
eva and foam double strap with velcro closing
Size: S, M, L, XL



TPL-2724
MMA Gloves curved
Made of cowhide leather filled with high density
eva and gel with extra protection to thumb
Size: S, M, L, XL



TPL-2725

MMA Gloves curved
 Made of cowhide leather
 closure with velcro and laces special thumb
 with neoprene padded with high density eva and foam
 Size: S, M, L, XL



TPL-2726

MMA Gloves curved
 Made of cowhide leather strap with velcro closing
 filled with high density eva and foam
 Size: S, M, L, XL



TPL-2727

MMA Gloves curved
 Made of cowhide leather strap with velcro closing
 filled with high density eva, foam and gel
 Size: S, M, L, XL



TPL-2728

MMA Gloves curved
 Made of imported PU with special printing double strap
 for better fit filled with high density eva and foam
 Size: S, M, L, XL



TPL-2729

MMA Gloves curved
 Made of artificial leather with printing
 open palm without thumb hole filled with
 high density eva and foam
 Size: S, M, L, XL



TPL-2730

MMA Gloves curved
 Made of vinyl with printing
 padded with high density eva and foam
 Size: S, M, L, XL



TPL-2731

MMA Gloves curved
 Made of vinyl with velcro closing padded with
 high density eva and foam
 Size: S, M, L, XL



TPL-2732

MMA Gloves curved
 Made of self designed imported vinyl
 filled with eva and foam
 Size: S, M, L, XL



TPL-2513

Bag Mitt
Made of imported vinyl with neoprene thumb
aero punch technology with clima cool
filled with hand mould specially designed for better fit
Size: S, M, L, XL.



TPL-2514

Bag Mitt
Made of imported vinyl with clima cool
strap with velcro closing filled with hand mould
Size: S, M, L, XL.



TPL-2608

Taekwondo Gloves
Made of vinyl and fabric
filled with soft eva
Size: S, M, L, XL.



TPL-2609

Karate Gloves
Made of vinyl
specially designed with thumb filled
with machine mould
Size: S, M, L, XL.



TPL-2909

Focus Mitt
Made of cowhide leather with clima cool
specially designed curved focus mitt
for ultimate fit with special mould
filled with eva and target padded with gel
Size: S, M, L, XL.



TPL-3010

Head Guard
Made of cowhide leather and buffalo
specially designed for protection and fit
Size: S, M, L, XL.



TPL-3011

Head Guard
Made of cowhide leather inside with split leather
specially designed for protection and fit
Size: S, M, L, XL.



TPL-3012

Head Guard
Made of cowhide leather inside with
split leather specially designed for
protection with laces on the head
Size: S, M, L, XL.



TPL-3013

Head Guard
Made of artificial leather
specially designed for protection
Size: S, M, L, XL.



TPL-2957

Thai Pad
Made of buffalo leather
filled with high density eva and underlay
Size: S, M, L, XL.



Shin-in-Steps

www.thapurgroup.com



TPL-5059

Shin In Steps
moulded shin in step in fabric material
specially designed for MMA
Size: S, M, L, XL.



TPL-5061

Shin In Steps
Made of self designed vinyl
hand mould back with neoprene shin with gel padded
specially designed
Size: S, M, L, XL.



TPL-5063

Shin In Steps
made of vinyl with neoprene
filled with hand mould
specially designed
Size: S, M, L, XL.



TPL-5060

Shin In Steps
Made of cowhide leather filled with
hand mould back with neoprene
specially designed
Size: S, M, L, XL.

TPL-5062

Shin In Steps
moulded shin in step in vinyl
specially designed for MMA
Size: S, M, L, XL.



THAPUR PAKISTAN
www.thapurgroup.com

New Pearl Building, Maharaja Road,
Sialkot 51310, Pakistan
Tel: +92 52 4591572, 4588437
Fax: +92 52 4589055
Fax: +92 52 4589055
e-mail: info@thapurgroup.com
web: www.thapurgroup.com